



## **MSP LevelSoft USER GUIDE**

### **Monitoring Solution Providers Pte Ltd**

33, Ubi Avenue 3, #05-31

Vertex, Singapore 408868

Tel: (65) 6747 9766 Fax: (65) 6458 0824

Sales: [sales@mspsystem.com](mailto:sales@mspsystem.com)

### **DISCLAIMER**

This document is Copyright © 2015 by the Monitoring Solution Providers Pte Ltd. MSP retains full copyright ownership, rights and protection in all material contained in this document. You may use this document for your own purposes. You may distribute this document to other persons provided that you attribute the document as having been generated by MSP and that the document is available free of charge on the MSP Web site.

Though MSP believes reasonable efforts have been made to ensure the accuracy of the information contained in this document, it may include inaccuracies or typographical errors and may be changed or updated without notice. It is intended for discussion and educational purposes only and is provided "AS IS" WITHOUT WARRANTY OF ANY KIND AND RELIANCE ON ANY INFORMATION PRESENTED IS AT YOUR OWN RISK. In no event shall Kodi be liable for any direct, indirect, punitive, incidental, special, or consequential damages or damages for loss of profits, revenue, data, down time, or use, arising out of or in any way connected with the use of this document or performance of any services, whether based on contract, tort, negligence, strict liability or otherwise. If you are dissatisfied with any portion of this document, or with any of these terms of use, your sole and exclusive remedy is to discontinue using this document.

---

## Table of Contents

1.0	MSP LevelSoft Overview .....	3
2.0	System Requirements.....	3
3.0	MSP LevelSoft.....	3
3.1.	Installing MSP LevelSoft.....	3
4.0	Licensing.....	8
5.0	MSP LevelSoft Menus .....	10
6.0	MSP LevelSoft Procedure.....	10
6.1	How to Edit Points .....	13
6.2	How to Delete Points .....	13

---

## 1.0 MSP LevelSoft Overview

**MSP LevelSoft** is automatic processed application to insure leveling observations meet specifications and procedures. It is to reduce raw leveling data into standard. Application supports sdr33,sdr20,sdr20BBFF,CS1 and CS2.

## 2.0 System Requirements

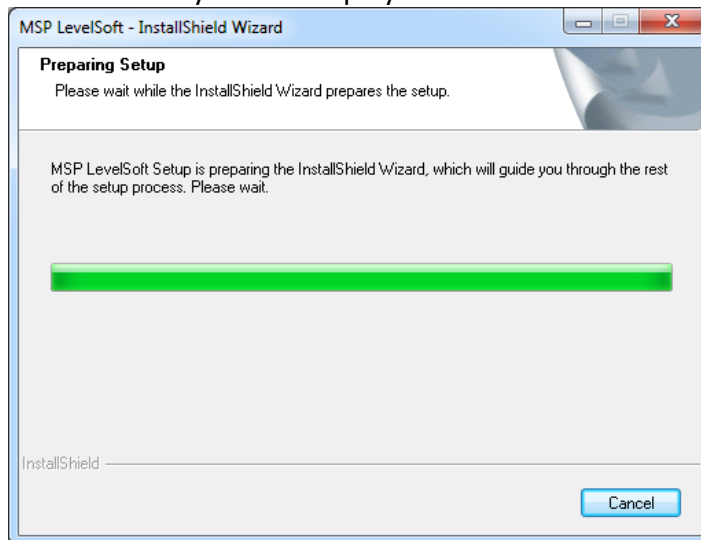
Minimum System Requirements

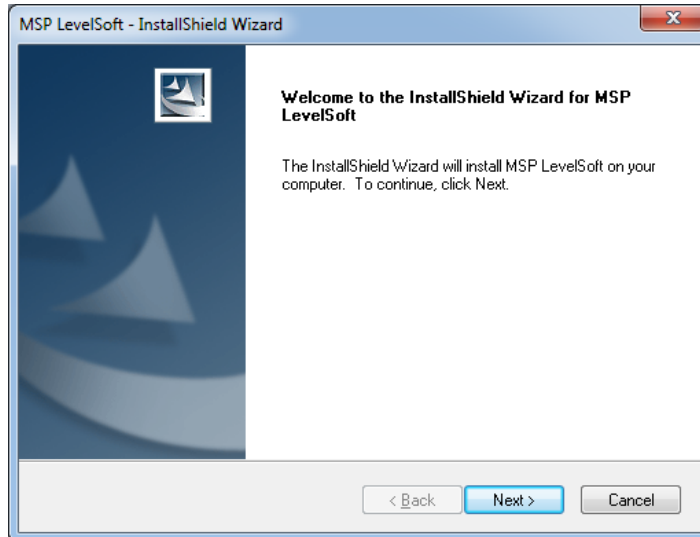
- Microsoft® Windows XP Professional or later
- 256MB of RAM
- Minimum 800x600; Recommended 1,024 x 768 or higher

## 3.0 MSP LevelSoft

### 3.1. Installing MSP LevelSoft

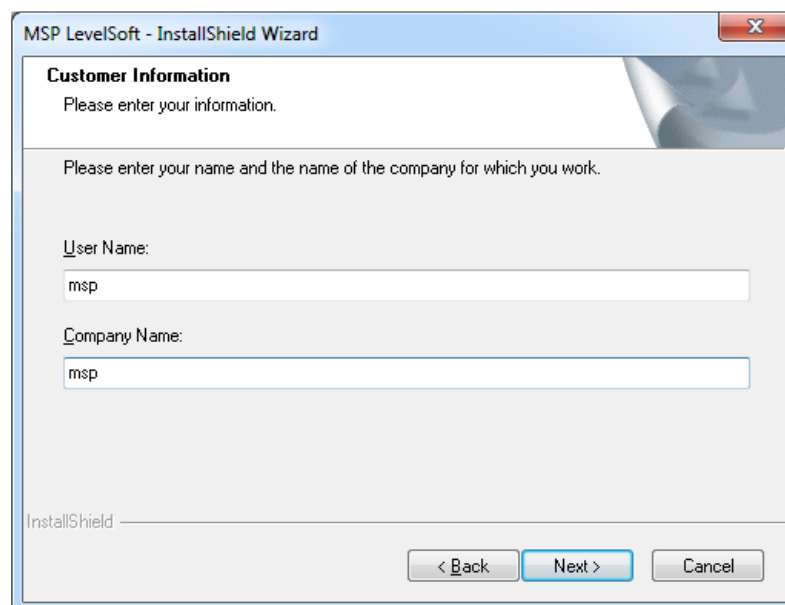
1. Once the MSP LevelSoft setup file is double clicked the MSP LevelSoft Installation Wizard will automatically will be displayed.



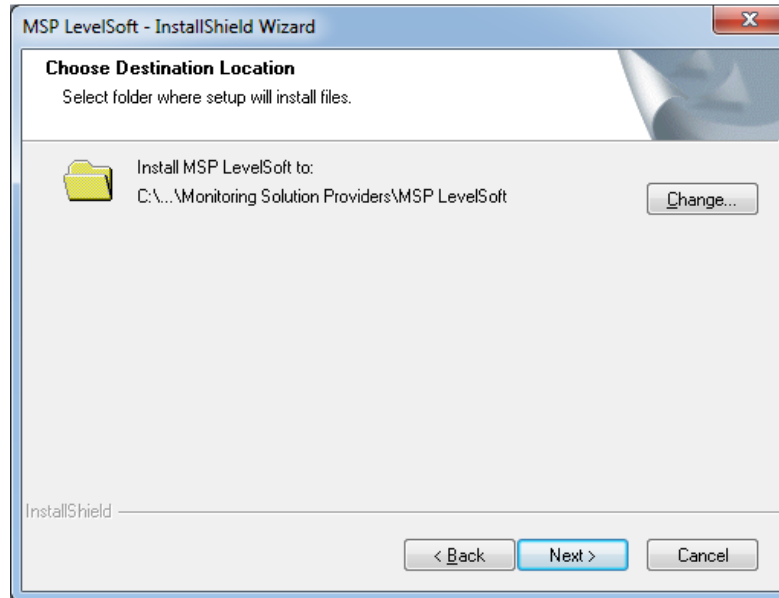


Click on Next to continue for installation or Cancel to abort installation

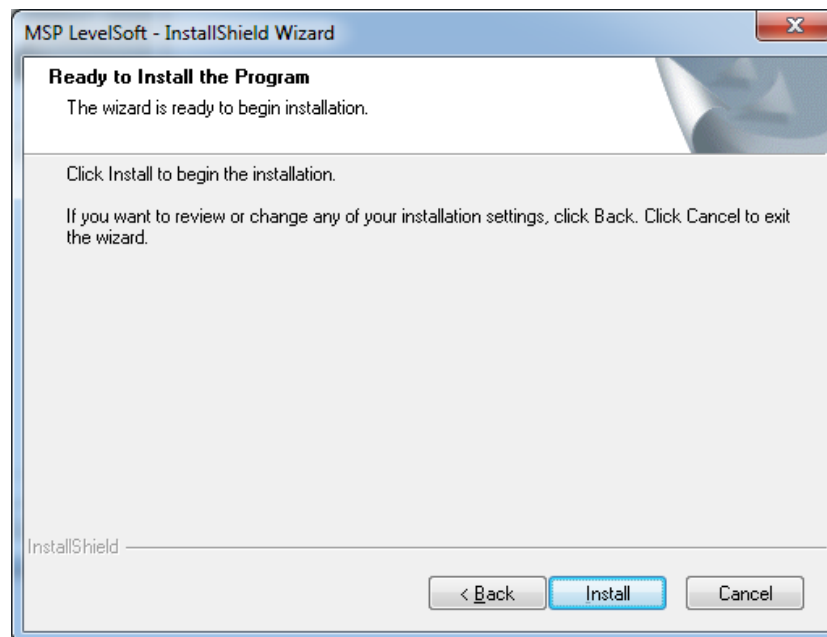
2. Enter user name & company name. Then Click on Next button to Continue



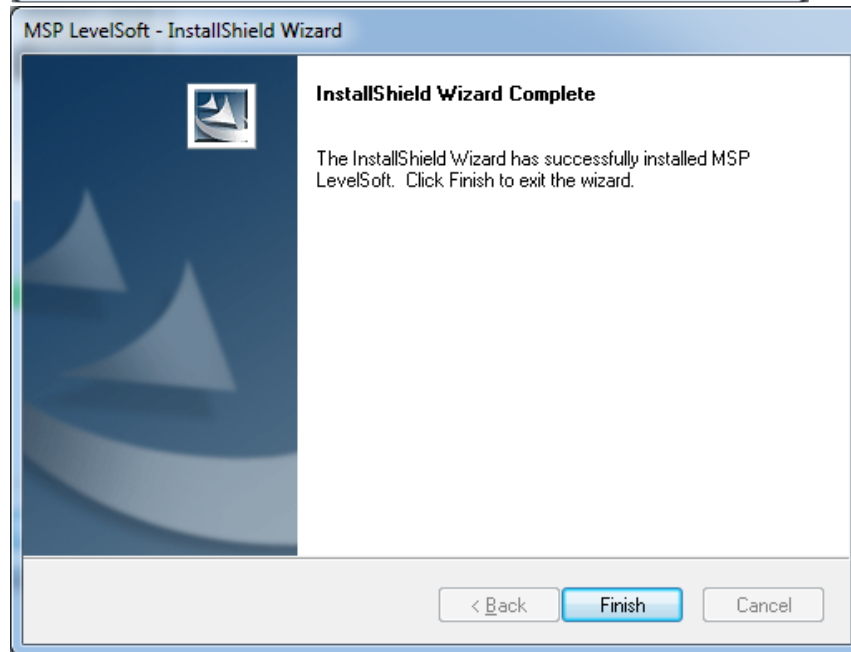
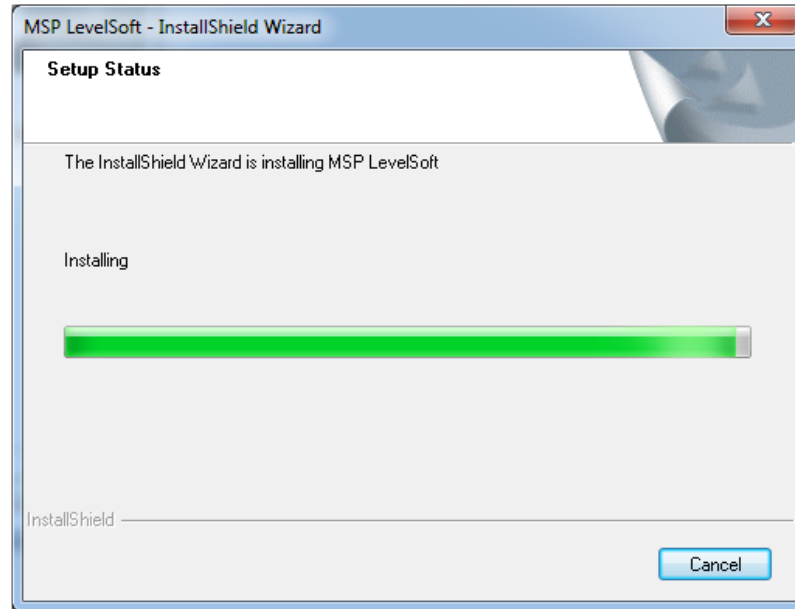
3. Choose the Installation Destination Folder for the MSP LevelSoft, It is recommended to use the default settings. Installation folder to C:\Program Files\Monitoring Solution Providers\MSP LevelSoft



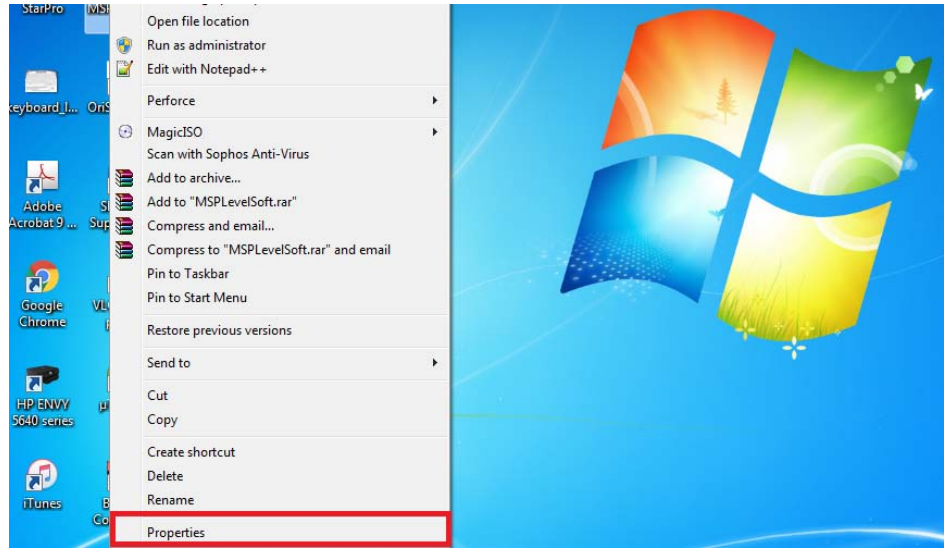
4. Click on Install Button to begin installation, Back button to change installation settings or Cancel button to abort installation.



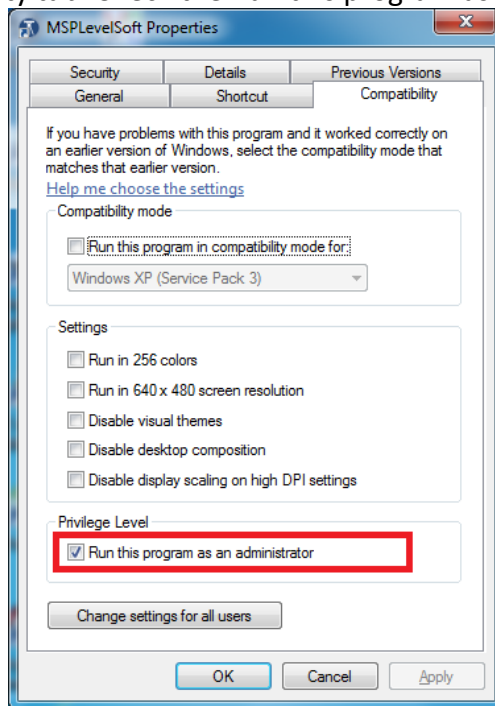
5. Once the Installation is done, click the Finish button. The shortcut is automatically displayed on the Windows desktop.



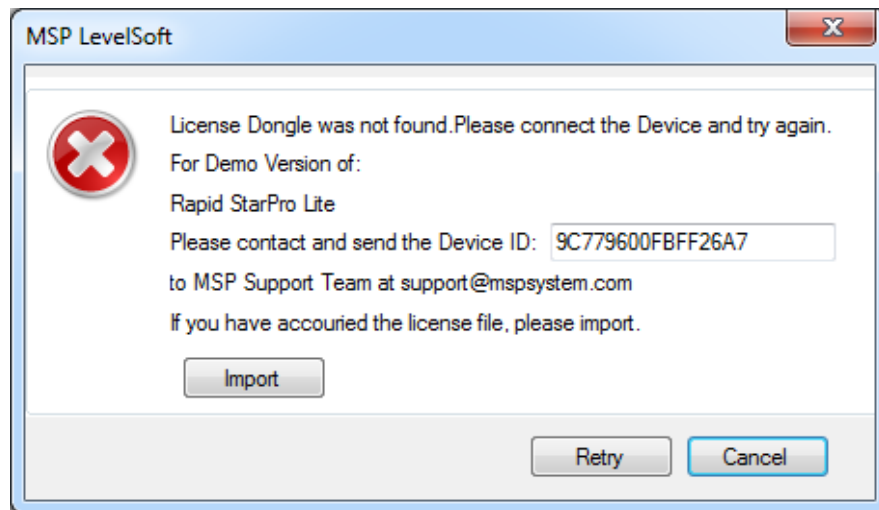
6. Click right clicked button of mouse on the shortcuts. Select properties.



7. Go to Compatibility tab. Check the Run this program as an administrator. Click ok.



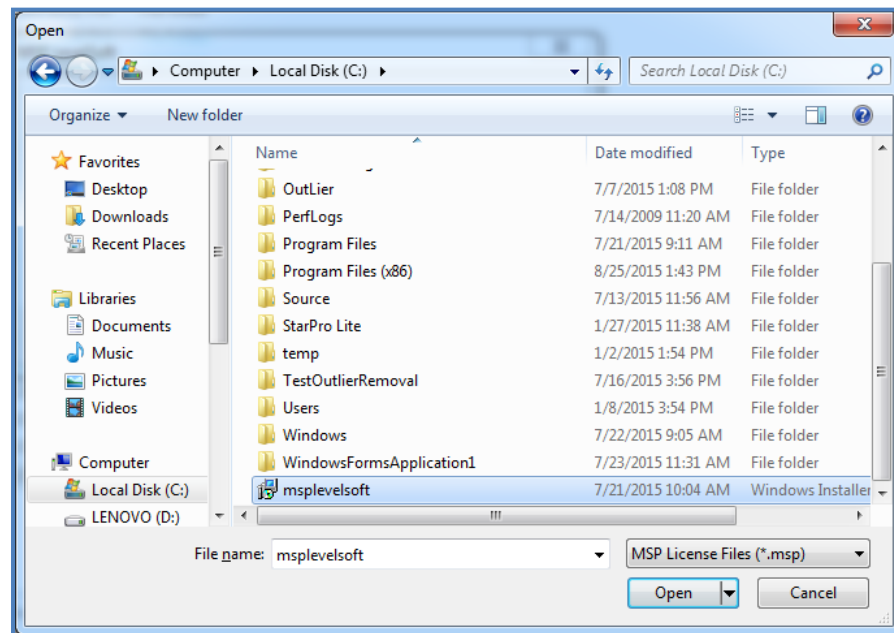
## 4.0 Licensing



Get Device ID from alert window. Then ask Please contact your nearest distributor to request for licensing by your device ID.

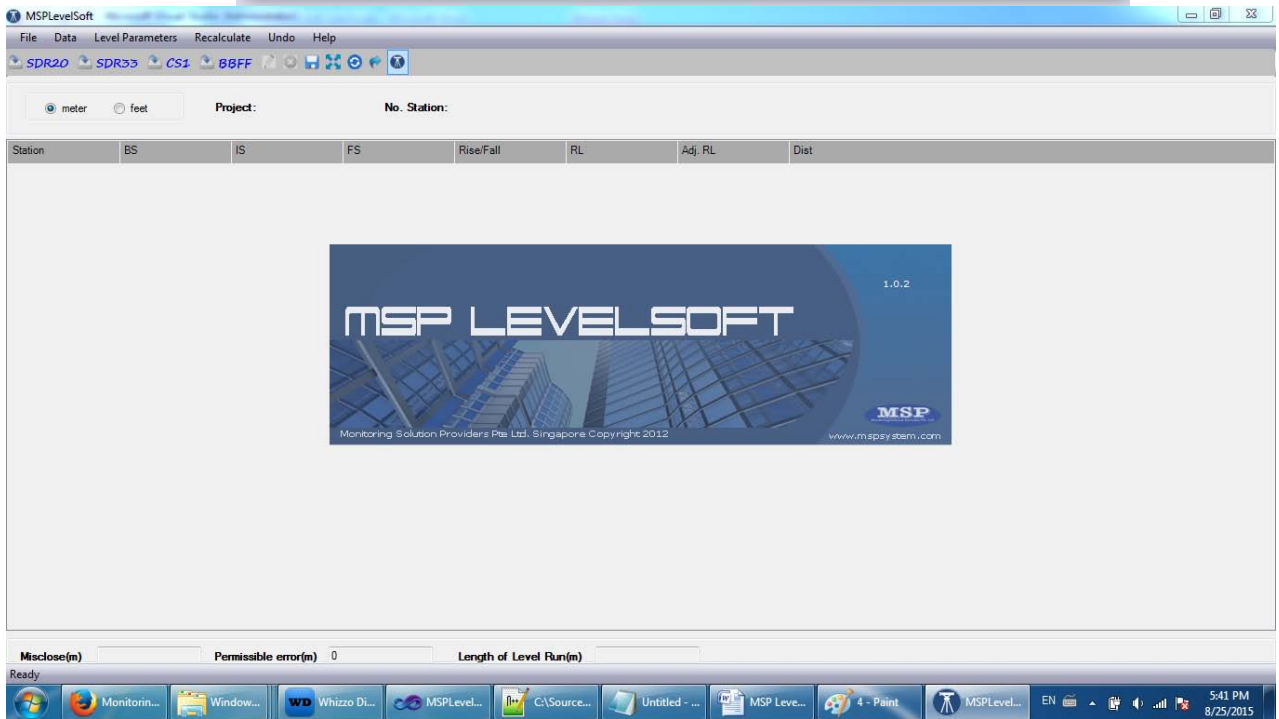
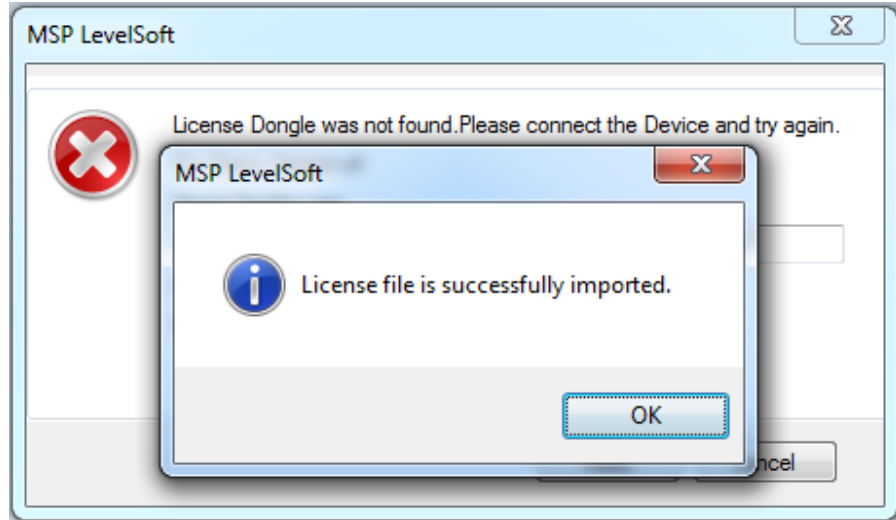
### Import License

Import the license file in order to use the full feature of MSP LevelSoft. Browse the license file and select file. Then click open.



Once license file imported, It will show information window successfully. Then MSP LevelSoft will run automatically.

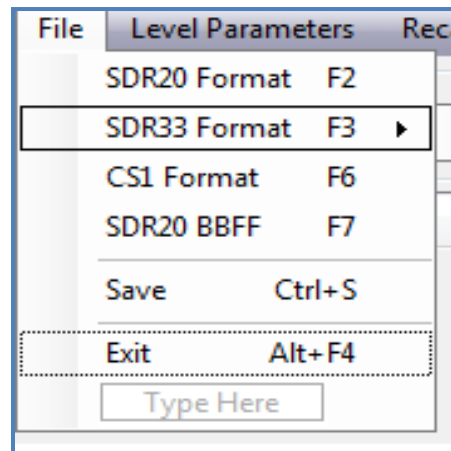




---

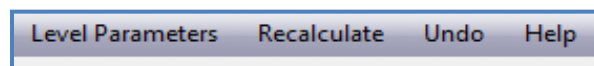
## 5.0 MSP LevelSoft Menus

### 1. File Menu:



Under the File Menu, Users can import the raw data of different type of format. After import and edit ,users can save standard leveling format .There are two type of format which type users want to choose. They are text file(\*.txt) format and excel (\*.xls,\*.xlsx) format.

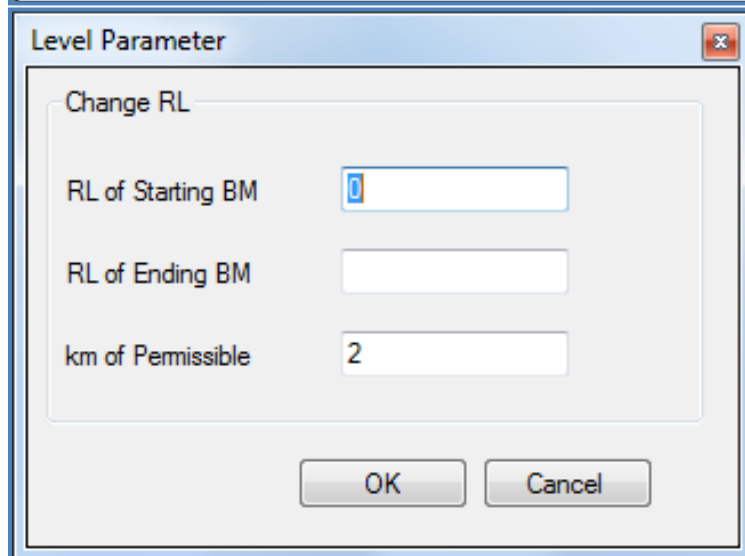
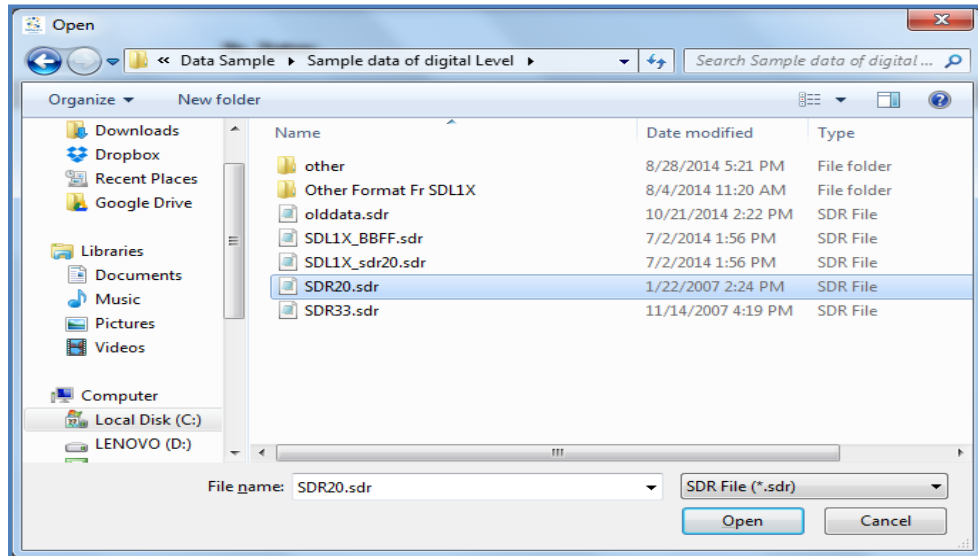
### 2. Menus



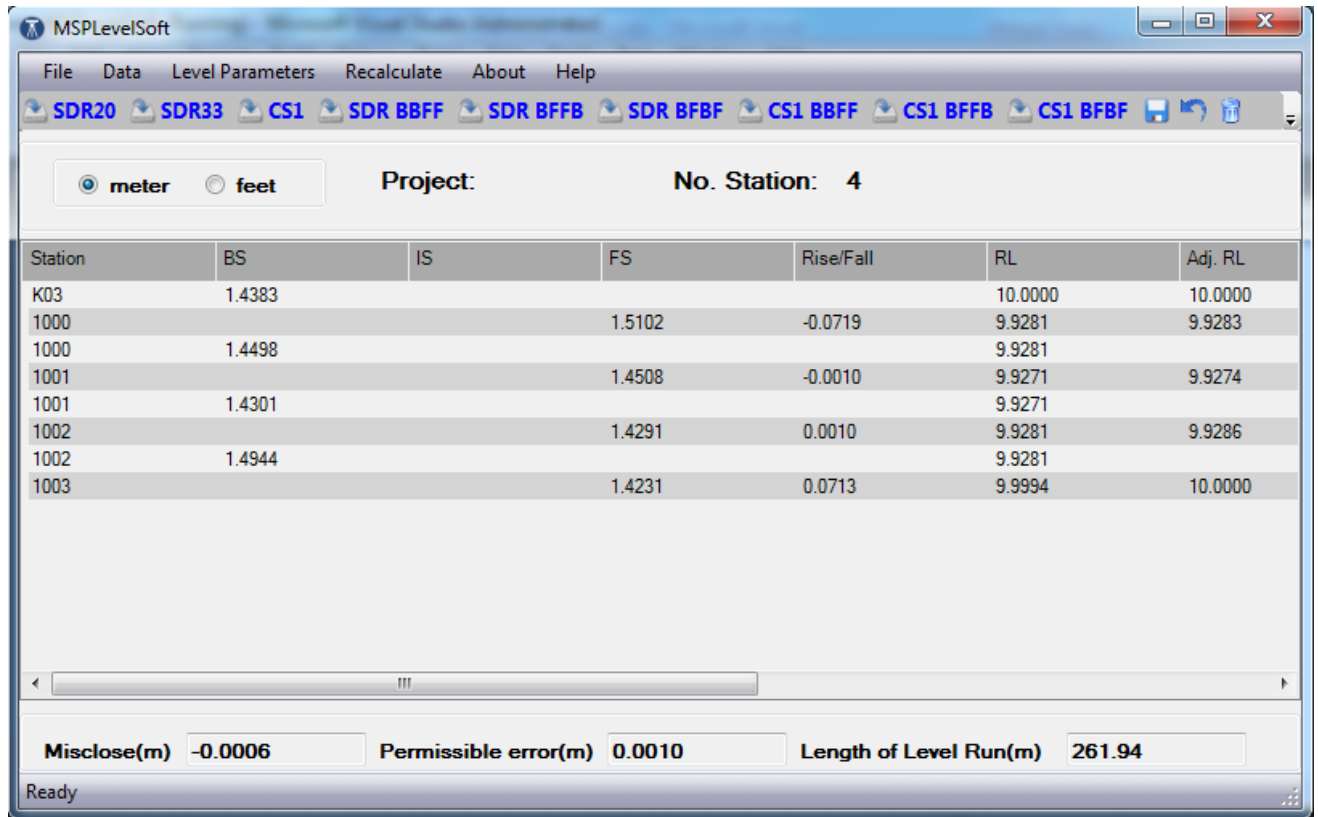
Main Menu contains the basic function to control the data. Under Level Parameters Menu users can pass parameters of RL Starting, RL Ending and K of permissible.

## 6.0 MSP LevelSoft Procedure

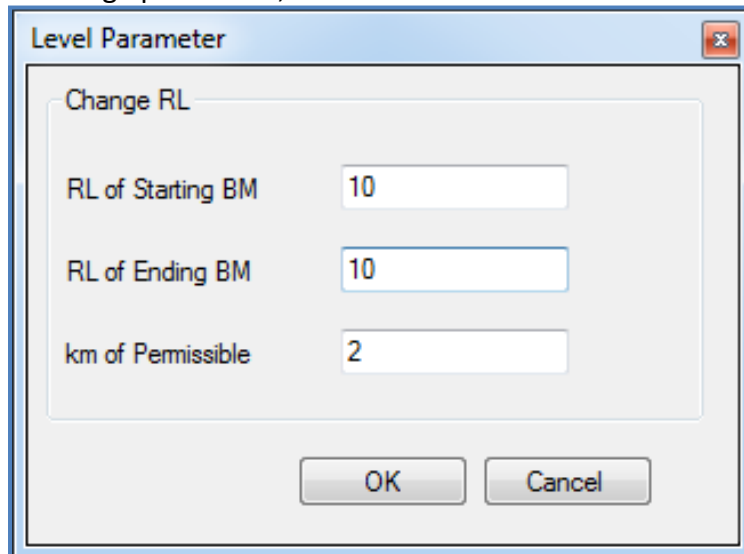
1. Import raw data from file menu according format. Click open.



2. Once User Clicked open, will appear Level Parameter window automatically. Enter parameter of RL & km if user would. if user doesn't enter parameter, will calculate with default value. Click ok to process.



3. If user has to change parameter, Click Level Parameters menu.



Once Clicked OK, It will process the result again according to parameter value.

4. If user has to edit or delete points in the existing data, can able to edit. Whenever editing of data, must press **Recalculate menu** to get updated correction of leveling.
5. There is **undo** menu. It can get last transaction before changing of any edition.
6. There are **Save** in the File menu. System provides to save two file type that are text(\*.txt) and excel(\*.xls,\*.xlsx).

## 6.1 How to Edit Points

Station	BS	IS	FS
K03			
1000			1.5102
1001			1.4508
1001	1.4301		
1002			1.4291
1002	1.4944		
1003			1.4231

Select the row that you want to edit and right click. Select **edit Station**. It will appear below edit window.

The dialog box titled "MSPLevelSoft" contains two options: "Station Name" (checked) with a text field containing "K03", and "Position" (unchecked) with a dropdown menu showing "BS". At the bottom are "OK" and "Cancel" buttons.

There are two type of edition. They are renaming points and changing position. Click OK after editing to get effect. Click Cancel if it wants no effect. After all edition what you have are finished, press **Recalculate menu** to get updated correction of leveling.

## 6.2 How to Delete Points

Select the row that you want to delete and right click. Select **delete**. It will appear below confirmation message window.

The dialog box titled "MSPLevelSoft" displays a warning message: "Warning: You are about to delete prism 1000. Do you wish to continue?". At the bottom are "Yes" and "No" buttons.

Click yes to delete.

**MSP LevelSoft Shortcut key list:**

---

File Open SDR20: F3  
File Open SDR33: F6  
File Open CS1&CS2: F7  
File Open CS1 BBFF: F8  
File Open CS1 BFFB: F9  
File Open CS1 BFBF: F10  
File Open SDR20 BBFF: F11  
File Open SDR20 BFFB: F12  
File Open SDR20 BFBF: Ctrl + B  
Save: Ctrl + S  
Exit: Alt + F4  
Undo: Ctrl + Z  
Clear All Data: Shift + Del  
Edit: F2  
Delete: Del  
Level Parameter: F4  
Recalculate: F5  
About: Alt + A  
Help: F1